

CONTENTS

About us	02
Power Switch	03
Mini Switch/ Dimmer.....	03
Touch Panel Switch.....	04
Thermostat	05
Fan coil Thermostat.....	05
Heating Thermostat.....	07
Heat Pump Thermostat.....	10
Air Quality Monitor	11
CO2 Monitor.....	11
PM2.5 Monitor.....	12
Customized hardware	13
Mlink-5000.....	13
Mpad/Mcpad.....	14

MCOHome Technology Co., Ltd

About us

As a professional manufacturer, MCOHome is committing to development of the IoT market. Our cohesive R&D team keeps developing new end controlling devices based on Z-Wave Technology, to meet various consumer needs. By now, the products line including:

- Power switch (embedded modules / integrated touch panel switch/ smart plug);
- Thermostat for heating/cooling systems (EU/US);
- Air quality monitors (CO2, PM2.5);
- Customized hardware platform.

We also can provide controller with Z-Wave / Wi-Fi module for electrical appliances, such as: air conditioner (residential/commercial), air purifier, fresh air ventilation device, electrical heating device and solar water heater etc.

All products can be compliance to the CE, ETL, UL, FCC, RoHS or other standards you may need.

Hereunder you can find our product catalog with detail information. Please don't hesitate to contact us with any questions.

MCOHome Technology Co., Ltd

All products (functions, communication protocols: Z-Wave/WIFI & design patterns) can be customized to meet customers' requests.

Power Switch

Power switch is the most basic application in home automation. MCOHome provides a series of switches/ dimmers with elegant design and stable performance, to control the house-hold electrical appliances like lamps, motor, television etc. Their various dimensions and specifications can suit for different markets and to meet different customer needs.

Mini Switch/Dimmer



220

- Embedded modules for on/off switching or light dimming 210
- Live & Neutral wire both required
- Suit for any kind of switch panel (Toggle switch, Touch buttons, Momentary buttons)
- Load Type: Resistive load
- Power supply: 85~260VAC, 50/60Hz.
- Z-Wave frequency: 868.42MHz(EU) , 908.42MHz (US) or other frequency customized

Optional Models:

Item	Models	Dimension	Max Load	Feature	Certification
On/Off switch module	MH-S210	51*51*21mm	1*2A	With Energy Meter	CE(LVD), ETL, FCC Z-Wave
	MH-S212	51*51*21mm	1*5A, 1*10A	Support 2 resistive loads	
	MH-S220	38*44*17mm	1*10A	Support high load	
Dimmer module	MH-P210	51*51*21mm	1*2A	With Energy Meter	
	MH-P220	38*44*17mm	1*2A	Compact design	

Touch Panel Switch

- Elegant designed glass panel with capacitive touch buttons
- Easy for installation and stable in performance
- Variety choice of installation size for different market
- Power supply: 85~260VAC, 50/60Hz
- Z-Wave frequency: 868.42MHz(EU) , 908.42MHz (US) or other frequency customized



S314



S412



S513

Optional Models:

Item	Models	Max Load	Feature	Installation Dimension	Certification
310 series	MH-S311	1*5A	On/off switch panel	Flush mounted in 86*86mm square junction box (Asia,UK)	CE(RTTE,LVD) Z-Wave
	MH-S312	2*5A			
	MH-S314	4*5A			
	MH-S311H	1*10A	Support high inrush current upto 165A within 20ms. Special for LED bulb		
	MH-S312H	2*10A			
	MH-P311	1*2A	Dimmer panel		
410 series	MH-S411	1*5A	On/off switch panel	Flush mounted in 60*60mm square or round junction box (Europe)	CE(RTTE,LVD) Z-WAVE
	MH-S412	2*5A			
	MH-S411H	1*10A	Support high inrush current upto 165A within 20ms. Special for LED bulb		
	MH-P411	1*2A	Dimmer panel		
510 series	MH-S511	1*5A	On/off switch panel	Flush mounted in 90*60mm rectangle junction box (America)	ETL, FCC, Z-Wave
	MH-S512	2*5A			
	MH-S513	3*5A			
	MH-S511H	1*10A	Support high inrush current upto 165A within 20ms. Special for LED bulb		
	MH-P511	1*2A	Dimmer panel		

Thermostat

MCOHome Thermostats are Z-Wave enabled devices for indoor temperature control. They can be applied to control different heating/ cooling systems, such as: heating cable, heating film, water / electrical valve, boiler, fan coil, solar energy controller, heat pump, air ventilation system etc. With various design and complete function, the device will satisfy customer need.

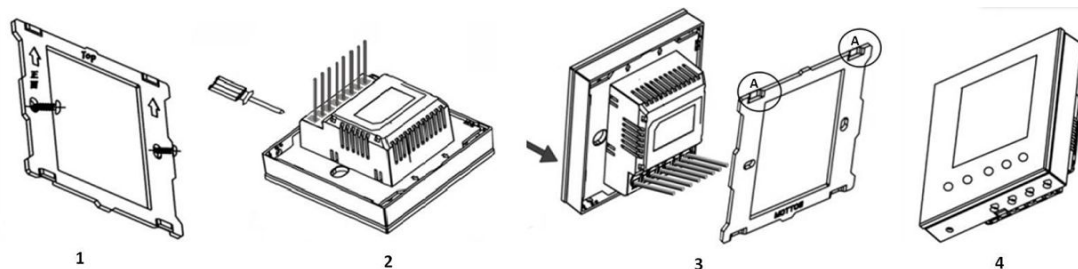
Fan Coil Thermostat

MH8

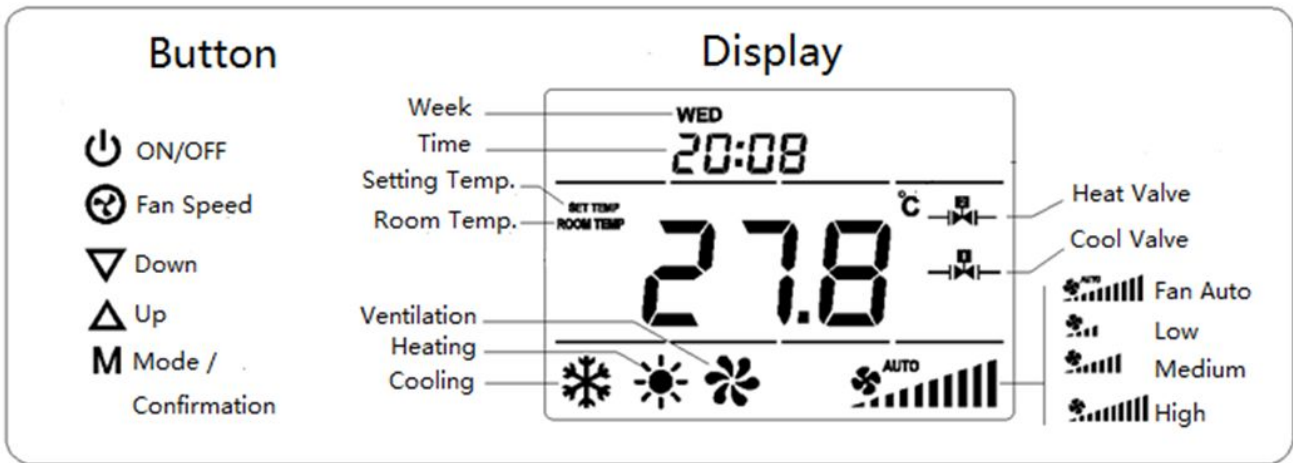
- Applied to control fan coil of central AC (2 or 4 pipes)
- Tempered glass panel with capacitive buttons
- Clear display with basic control information
- With Cooling, Heating, Ventilation modes
- Intelligent on/off control of 3-speed fan, and electric valve
- Power Supply: 85~260VAC/ 24VDC
- Working Environment: 0~55°C; <95% RH (Non-condensation)
- Dimension: 86*86*41 mm
- Installation: flush mounted in 86*86mm junction box
- Built-in Z-Wave module (EU/US); Optional: RS485, WIFI



Installation



Display



Standard Models

Model	2-pipe/ 4-pipe	Power supply	Fan Type	Valve Type	Communication	Certification
MH8-FC-EU	2-pipe	85~260VAC	3-speed fan	3-line valve or 2-line valve	Z-Wave	CE, Z-Wave
MH8-FC4-EU	4-pipe					

Optional Models

Model	2-pipe/ 4-pipe	Power supply	Fan Type	Valve Type	Dry contact input	Dry contact Output
MH8-FD-W3N3S	2-pipe	85~260VAC	3-speed fan	3-line valve/ 2-line valve	1-load	N
MH8-FD-W3N3R	2-pipe	85~260VAC	3-speed fan	3-line valve/ 2-line valve	N	1-load
MH8-FD-U3CASR	2-pipe	24VAC	3-speed fan (Dry contact)	0-10V Analog valve	1-load	1-load
MH8-FD-WANFSR	2-pipe	85~260VAC	0-10V Analog fan	3-line valve/ 2-line valve (Dry contact)	1-load	1-load

Heating Thermostat

Applied to control water heating system like: wall mounted boiler, water valve/pump, under floor pipes, radiator systems, etc; and electrical system like: heating cable, electro-thermal film, heating actuator, electrical globe valve etc.



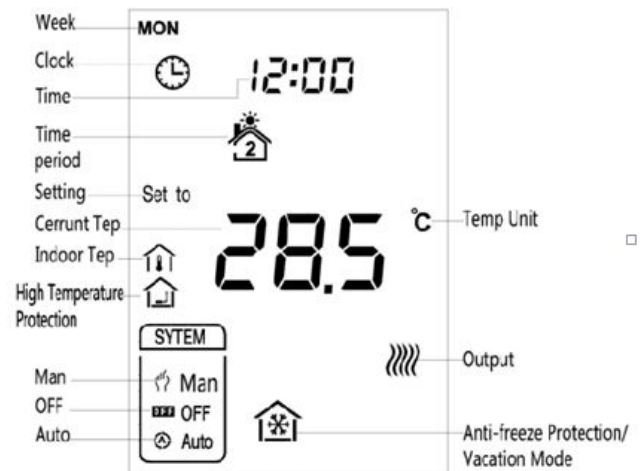
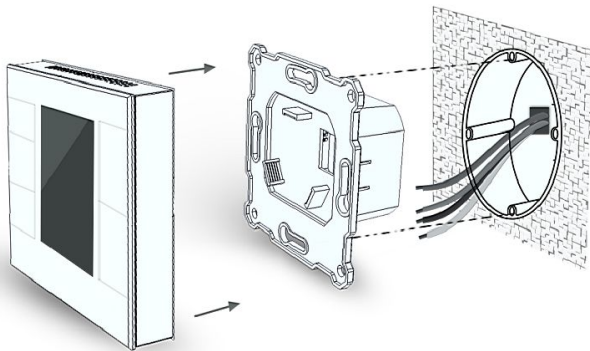
MH7

- Tempered glass panel with capacitive buttons
- Programmable schedule: 4 events each day of 7 days; 5+2; 5+1+1
- Operation: Manual, Auto (Time periods), Holiday (Energy saving)
- With two temperature sensors for control

Internal Temp. Sensor: NTC 15K

External Temp. Sensor(optional): NTC R25°C=15K Ω B25°C/50°C=3550K

- Working Environment: 0-50°C; <90% RH (Non-condensation)
- Built-in Z-Wave module (EU/US); Optional: RS485, WIFI



Optional Models

Model	System	Power supply	External sensor	Max Output	Dimension
MH7-EH-EU	Electrical heating	85~260VAC	Y	1*16A	86*86*43 mm Flush mounted in 60*60mm square junction box
MH7-WH-EU	Water heating/ Boiler	85~260VAC / 24VAC	optional	1* 5A	

MH3800

- Battery powered device with compact design
- Clear display with system information
- Programmable schedule: 4 events each day of 7 days; 5+2; 5+1+1
- Operation: Manual, Auto (Time periods)
- With two temperature sensors for control

Internal Temp. Sensor: NTC 100K

External Temp. Sensor(optional): NTC R25°C=100K Ω B25°C/50°C=3950K

- Working Environment: 0-50°C; <90% RH (Non-condensation)
- Built-in Z-Wave module (EU/US); Optional: RS485



Optional Models

Model	System	Power supply	Output type	Max Output	Dimension
MH3800-EH-EU	Electrical heating	2-AA battery	Heating cable/ film	1*16A	86*86*26 mm Wall surface-mounted
MH3800-WH-EU	Water heating/ Boiler	2-AA battery	Valve/ boiler	1*5A	

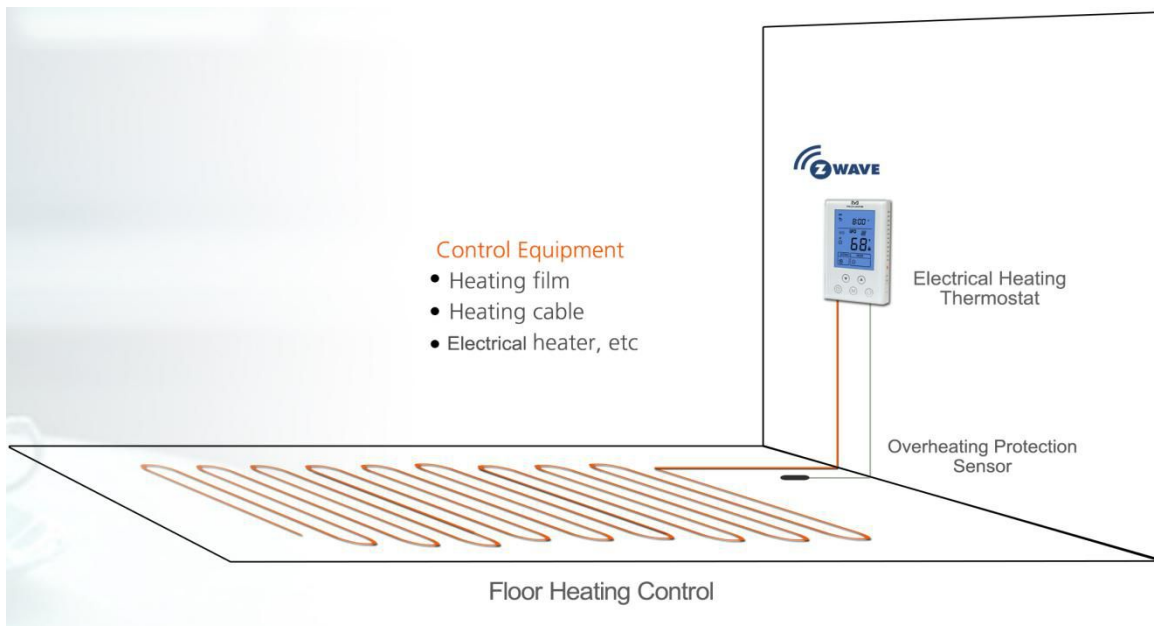
MH4-US Features

- Tempered glass panel with capacitive touch buttons
- Clear display with system information
- With two sensors to detect indoor& floor temperature
- Floor overheating protection
- GFCI(leakage protection): level 5mA
- ETL, FCC Certification
- Multi-working modes to meet various user needs:
 - ✓ Time Period(Schedule) Mode
 - ✓ Comfort Mode
 - ✓ Energy-saving Mode
 - ✓ Vacation Mode
- Programmable schedule: 4 periods each day of 7 days; 5+2; 5+1+1
- Built-in Z-Wave module (EU/US); Optional: RS485, WIFI



Specifications

- Power supply: 85~260VAC,50/60Hz
- Max output: 1800W at 120AC ; 3600W at 240AC
- Temp. display range: 32°F -99°F (0°C-37°C)
- Temp. setting range: 41°F -99°F (5°C-37°C)
- Temp. format: °C /°F ; Time format: 12h / 24h
- Z-Wave frequency: 908.42MHz
- Panel dimension: 76*120*20mm
- Vertical installation: hole pitch 82mm (American 120 box)



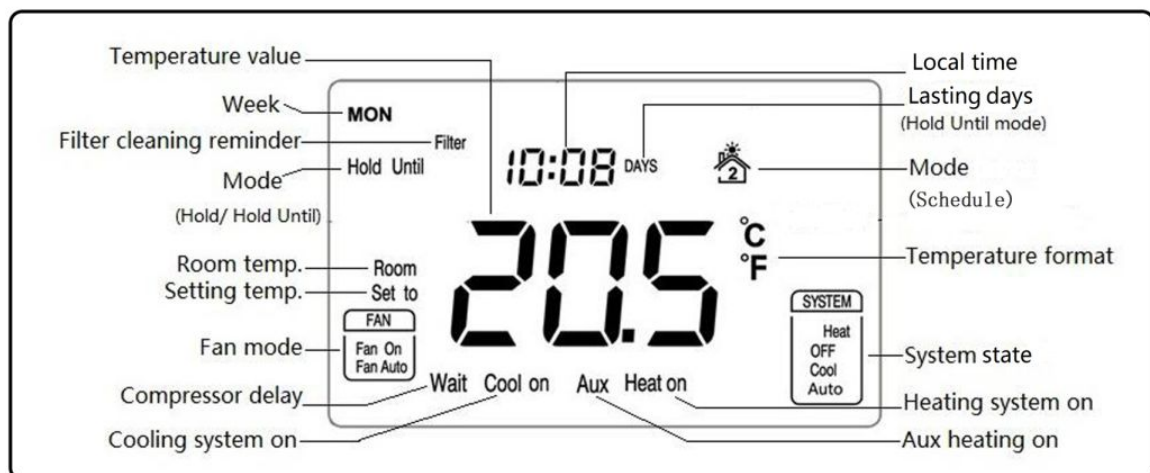
Programmable Heat Pump Thermostat

MH6-HP-US

- Applied to control heat pump system (up to 3H/2C)
- Elegant design panel with 4.3" LCD display
- Tempered glass panel with capacitive buttons
- Schedule, Hold and Holiday Modes
- Output: 2-stage cooling, 3-stage heating, fan(on/off)
- Power supply: AC24V, 50Hz
- Programmable schedules: 4 time periods each day of 7 days; 5+2; 5+1+1
- Compressor time-delayed protection (0-5mins)
- Filter change reminder (max 365 days)
- Dimension: 136*94*26mm
- Installation: wall surface mounted, Hole Pitch: 60mm or 82mm
- Built-in Z-Wave module (EU/US); Optional: RS485, WIFI



Display



Air Quality Monitor

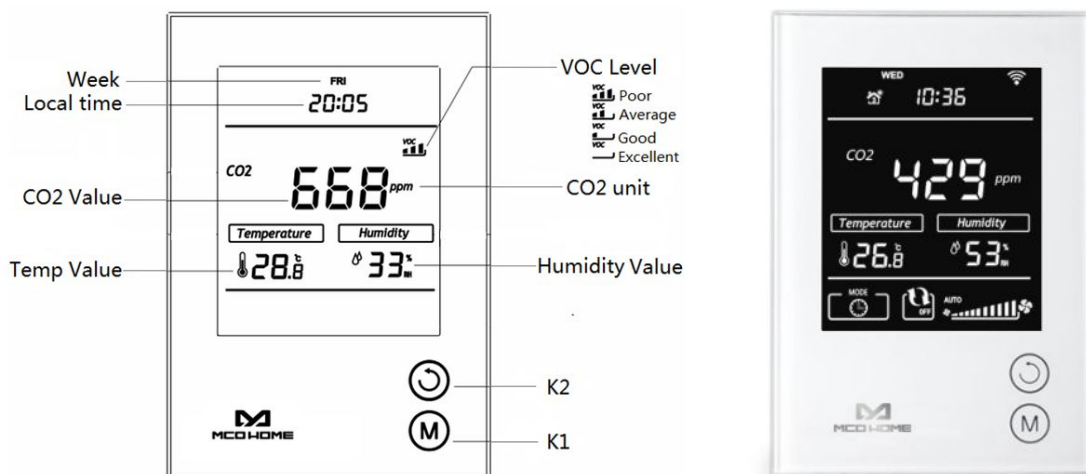
Air Quality Monitors can real-time detect & alarm CO₂, PM2.5 in air, and built-in with VOC, Temperature & Humidity sensors. They even can be customized with outputs to control air ventilation system directly. These devices are of high reliability and practicability, and able to work in any Z-Wave network with other Z-Wave certified devices.

CO2 Monitor



MH9--CO2

- Monitor CO₂ concentration in air with high accuracy
- Power supply: 12VDC
- CO₂ range: 0-2000ppm, default alarm threshold:1000ppm (adjustable)
- Temperature range: -9.0~50 °C; Humidity range: 0%~99%RH
- Dimension: 90*130*28mm (3.5" *5.1" *1.1")
- Installation: Wall-mounted (Vertical), Hole Pitch: 60mm or 82mm
- Z-Wave frequency: 868.42MHz(EU) , 908.42MHz (US) or other frequency customized



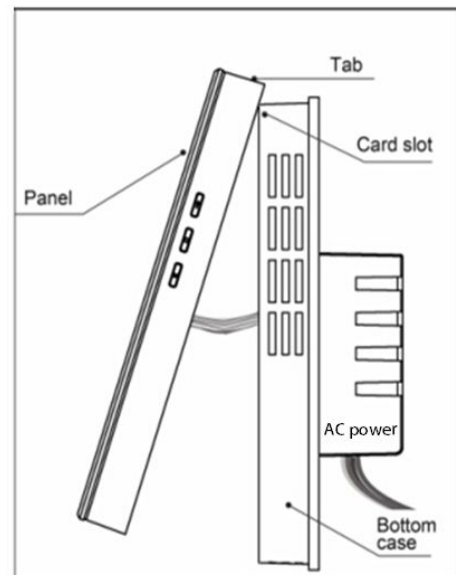
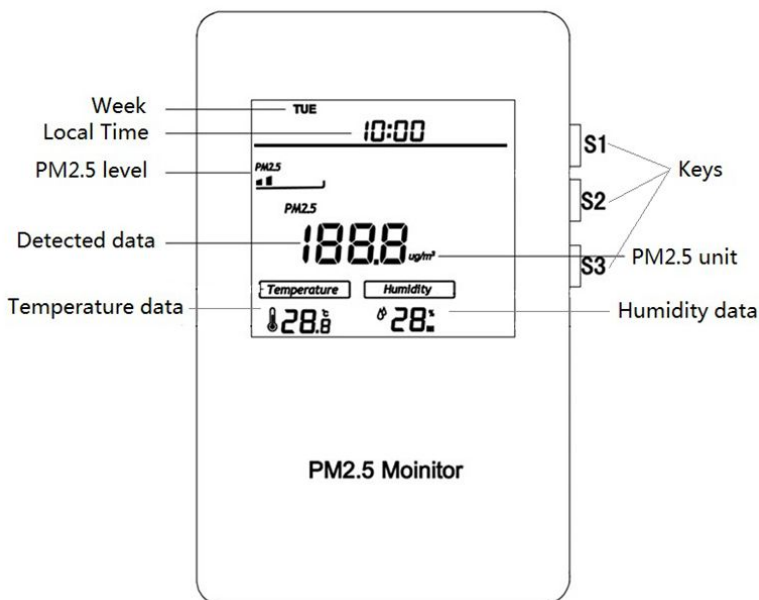
- Hold K2 3Sec to check the Node ID
- Hold K1 3Sec to set the local time

PM2.5 Monitor



MH10--PM2.5

- Monitor PM2.5 value in air with high accuracy
- Power supply: 12VDC/ 85-260VAC
- PM2.5 detection range: 0-999.9 ug/m³
- Temperature range: -9.0~50 °C; Humidity range: 0%~99%RH
- Dimension: 86*135*34mm (3.4" *5.3" *1.3")
- Installation: Wall-mounted (Vertical), Hole Pitch: 60mm or 82mm
- Z-Wave frequency: 868.42MHz(EU) , 908.42MHz (US) or other frequency customized



Customized Hardware

MLINK-5000

- **Hardware:**
CPU: TI Cortex-A8 800M (1G optional)
RAM: 512MB DDR3 SDRAM
ROM: 256MB NAND Flash
- **Software :** Android 4.1.2 supported
- **Interface (optional):**
1*100M Ethernet
1*USB2.0
1* WIFI
1* TF (Micro SD)
Built-in Z-Wave dongle SDK4.55
- **Dimension:**
120*120*54mm
Wall surface mounted or put on desktop



McPAD

- **Hardware:**

CPU: ARM Cortex™-A8

Graphic: 3D Graphic Engine (Built-in CPU)

RAM: 512MB DDR3 SDRAM

ROM: 256MB NAND Flash

- **Software** : Android 4.1.2 supported

- **Interface (optional):**

7-inch Multipoint capacitive touch LCD (24-bit True Color)

1* RS485

1*WiFi: IEEE 802.11b/g/n

1* TF (MicroSD)

Built-in Z-Wave dongle SDK4.55

- **Dimension:**

118*178*45mm

Flush mounted in 86*86mm junction box.

